

## Our Team:

### **2021 Board of Directors:**

Timothy Ference, *Chair*  
John J. Wilkes, Jr., *Vice-Chair*  
Tracey Chonko, *Secretary-Treasurer*  
Leonard J. Burger, Jr.  
Walter Griffith, Jr.  
John P. Hanish, Jr.  
Gary Moyer, Sr.

### **Associate Directors:**

Timothy J. Connolly, Jr.  
Chris Maylath  
Thomas Herbert

### **2021 Staff:**

Hunter Bednarczyk, *E&S Conservation Specialist*  
Heather Graham, *E&S Program Coordinator*  
George Jones, *MDC Program Technician*  
Deborah Josuweit, *Office Administrator*  
Jen Lauri, *Agricultural Conservation Specialist*  
John Levitsky, *Watershed Specialist*  
Joshua Longmore, *Executive Director*  
Mike Schlauch, *Ag & Roads Conservation Specialist*  
Frank Semanski, *Building & Grounds Keeper*  
Owen Sprau, *MDC Program Technician*

## Our Programs:

- **Erosion & Sediment Pollution Control** – provides review, permitting, inspections, and voluntary compliance technical services for earth disturbance activities
- **Agricultural Conservation** – provides technical support to plan and implement conservation practices on agricultural lands, including farmland preservation through conservation easements
- **Watershed Stewardship** – provides technical support to plan and implement watershed conservation efforts
- **Dirt, Gravel, & Low-volume Road Environmental Improvement** – provides technical support & grant funding to aid public road owners in implementing environmental improvement projects
- **Mosquito-borne Disease Control** – conducts surveillance and control activities to reduce the threat of mosquito-borne diseases
- **Conservation Education & Outreach** – Each of the district's programs seeks to not only "put conservation on the ground", but they also have a component of education and outreach with the goal of establishing a conservation ethic among the citizens of Luzerne County.

*The Luzerne Conservation District Board of Directors holds monthly meetings on the third Thursday of each month at 6:00 PM at the district's office. The public is welcome to attend.*

## Our Partners:

### **Cooperating Agencies and Personnel:**

*Partnerships are an extremely important part of successful natural resource stewardship. The district worked with many individuals and organizations to accomplish our shared conservation goals. The following individuals worked closely with the district staff and board:*

Andrew Kears, *District Conservationist, USDA NRCS*  
Shane Kleiner, *Watershed Manager, PA DEP*

### **We also have numerous partners within the following agencies:**

PA Association of Conservation Districts  
PA Department of Agriculture  
PA Department of Conservation & Natural Resources  
PA Department of Environmental Protection  
PA Fish & Boat Commission  
PA State Conservation Commission  
Penn State Center for Dirt & Gravel Roads Studies  
Penn State Cooperative Extension  
Pennsylvania Game Commission  
Pocono Northeast Resource Conservation & Development Council  
USDA Natural Resources Conservation Service

### **Nominating Organizations:**

*The following organizations have been approved by the State Conservation Commission to nominate people to serve on the Luzerne Conservation District Board of Directors. Nominations are given to the Luzerne County Council, and council appoints district directors from the names provided:*

Anthracite Scenic Trails Association  
Bloomingdale Grange #536  
Greater Wyoming Valley Audubon Society  
League of Women Voters, Luzerne County Chapter  
Luzerne County Farm Bureau  
Luzerne County Federation of Sportsmen  
Northeastern Pennsylvania Herpetological Society  
PA Environmental Council, North East Office  
Penn State Cooperative Extension, Luzerne County Board  
North Branch Land Trust  
Western Pocono Chapter of Trout Unlimited  
Luzerne County Historical Society  
USDA Farm Service Agency, Luzerne County Committee

Photo: Bowman's Creek in Ross Township, Luzerne County. Credit: John Levitsky



LUZERNE  
CONSERVATION DISTRICT

# 2021 Annual Report

*Conserving land and water resources  
in Luzerne County by promoting  
public awareness, providing technical  
assistance, and encouraging  
regulatory compliance.*

325 Smiths Pond Road  
Shavertown, PA 18708  
570-674-7991  
[www.luzcd.org](http://www.luzcd.org)



# About Us

We are a local agency responsible for soil and water conservation programs within Luzerne County. Our primary types of activities include implementing conservation projects, providing technical assistance, conducting education/outreach, and encouraging voluntary compliance with environmental regulations.

We accomplish our mission through cooperation with landowners and land users and by working with other public and private organizations to increase citizen awareness of the responsibility to be good stewards of our natural resources.

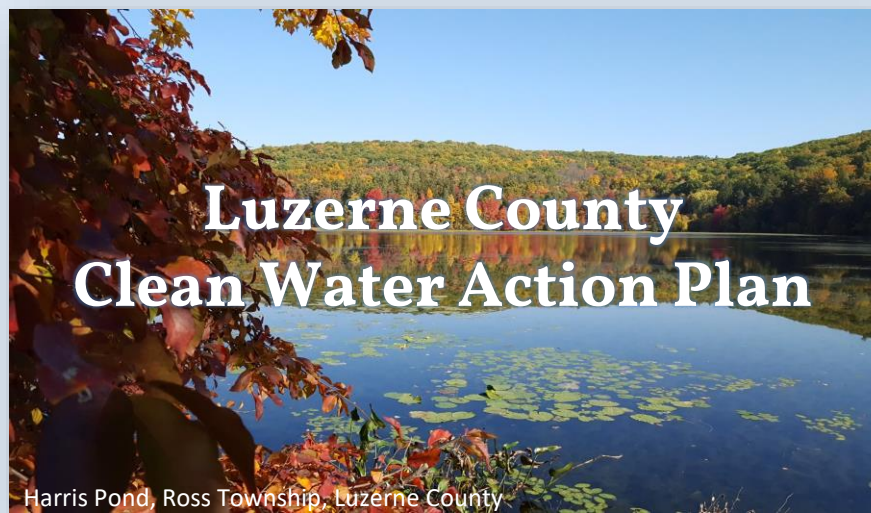
As one of the sixty-six county conservation districts in Pennsylvania, we are involved in developing local programs and implementing on-the-ground practices to protect the soil and water resources of Luzerne County. The district is led by a seven-member board consisting of community volunteers and a member of Luzerne County Council. Currently, the district has nine staff members who carry out the agency's day-to-day operations. It is the goal of the board and staff to implement programs that best serve the specific needs of the natural resources and people of Luzerne County.

**Funding delivered within the county for direct conservation efforts in 2021: \$513,000**

## More Work to Do

- Provide ongoing natural resource conservation assistance to state and federal partners and Luzerne County municipalities, landowners, & land users
- Implement ongoing and new conservation projects on farms and along streams, wetlands, and lakes
- Coordinate the preservation of more Luzerne County farms through the Farmland Preservation Program
- Provide multiple educational opportunities to promote the stewardship of our natural resources

# 2021 Featured Project:



In 2021, the Luzerne Conservation District, along with its consultant Larson Design Group and multiple local partners, undertook the extensive effort of developing the Countywide Action Plan for Clean Water in Luzerne County.

The plan established a blueprint to help reach local clean water goals within Luzerne County over the next few years. This voluntary planning effort gathered the input of local, state, and federal partners to identify priorities and initiatives to benefit water quality within Luzerne County. The initiatives and recommendations outlined within this Plan will benefit local communities while also assisting Pennsylvania in meeting its Chesapeake Bay cleanup goals.

***In fact, the work and data outlined in the plan indicate that the goals set for Luzerne County will be exceeded by an astonishing 755% for nitrogen pollution reduction and 217% for phosphorus pollution reduction.***

# Program Accomplishments

- Authorized **67** NPDES Permits for construction activities, with average approval time of **79** business days
- Responded to **68** complaints related to soil and water issues
- **378** Erosion & Sediment Control Plan Reviews and **213** site inspections for earth disturbance activities in Luzerne County
- Preservation of the **35th** farm in Luzerne County through administration of the county's Farmland Preservation Program, bringing the total preserved farmland to **3,343 acres**
- Provided conservation planning and federal Farm Bill Program contract coordination and agricultural conservation projects on more than **1,514 acres** of farmland within Luzerne County, in partnership with USDA NRCS, PA DEP, & PACD
- Planted riparian buffers with volunteers on East Fork Harveys Creek (**3.1 acres**) and Mitchners Run (**1 acre**)
- Assisted **8** agricultural producers with REAP Tax Credit Applications



- Provided **\$191,536** in municipal grant payments along with technical services for **7** projects to reduce sediment pollution from and improve storm water management, drainage, & road base/surfaces on local dirt, gravel, and low-volume paved roads



East Fork Harveys Creek Riparian Restoration, Hayfield Farms HOA Property, Lehman Township, Luzerne County