

Meyers Pond Riparian Tree Planting Project 2025
Jackson & Dallas Township, Luzerne County

The following quote document is for the Meyers Pond Riparian Tree Planting Project. One lump-sum quote shall be submitted for all items as described in the design documents. Bids shall be submitted on this document and placed in a sealed envelope. The envelope shall be labeled with the words, “**Meyers Pond Riparian Tree Project 2025 -Quote**”. All instructions shall be followed in the documents provided.

The performance time specified for this project including all tree planting work is from tree arrival approximately during the week of April 8th and must be completed before May 1, 2025

Having received clarifications on all items of conflict or upon which doubt arose, the undersigned proposes to furnish all labor, materials, and equipment called for by the said documents for the entire work, in accordance with the Contract Documents, for the stipulated sum shown in the Bid Schedule. **Insurance certifications will be required of the approved Contractor prior to award of the contract.**

The undersigned agrees to indemnify and hold harmless the Landowners, Luzerne Conservation District, PA DEP and all of their representatives against any and all claims for damages to persons asserted by any person, partnership, corporation, or other organization, arising out of services performed or undertaken by said contractor, it's agents, employees, or subcontractors, except for claims for damages directly caused by the sole fault or negligence of the parties hereto, their officers, or employees.

Submit bid to:

Joshua Longmore
Luzerne Conservation District
325 Smiths Pond Road
Shavertown, PA 18708

Bidder's Name _____

Address _____

Phone number _____ Fax: _____

Email _____

Federal EIN # _____

BID TOTAL _____

Signature

Date

Quote Opening Date/Time: **March 19, 2025, at 3:00 PM deadline for submittal**

Meyers Pond Riparian Tree Planting Project 2025

Jackson & Dallas Township, Luzerne County

Location: Various locations within Meyers Pond property Dallas & Jackson Twp., Luzerne County, PA 18708

A showing for the planting sites will occur starting on Overbrook Road at 9:00 AM on March 18, 2025.

Site Address: Bulford and Overbrook Roads, Dallas & Jackson Twps., PA 18708

Coordinates: 41.313058° -75.966795°

Project:

Project consists of planting 100 trees with materials supplied as noted in the design.

Item	Description	Qty	Unit	Unit Price	Sub-Total Price
1	Planting of trees, excavation, transportation of trees to planting sites, disposal of excess soil, purchase of compost and mulch, planting mixture, initial watering, tree trunk protection installation, and one call protection of utilities at all planting locations. (Trees, and tree protection will be supplied; Disposal of excess soil will be the contractor's responsibility)	100	Tree		
2	Hand planting of trees in wet areas per unit if necessary				

TOTAL BID FOR PROJECT= \$ _____

The undersigned agrees to meet all requirements stated in the quote instructions, drawings and specifications.

Contractors Name: _____

Signature

Date

Meyers Pond Riparian Tree Planting Project 2025

Jackson & Dallas Township, Luzerne County

Planting Specification 100 large caliper bare root trees on sites throughout Meyers Pond parcels, in Dallas & Jackson Twps., Luzerne County, PA

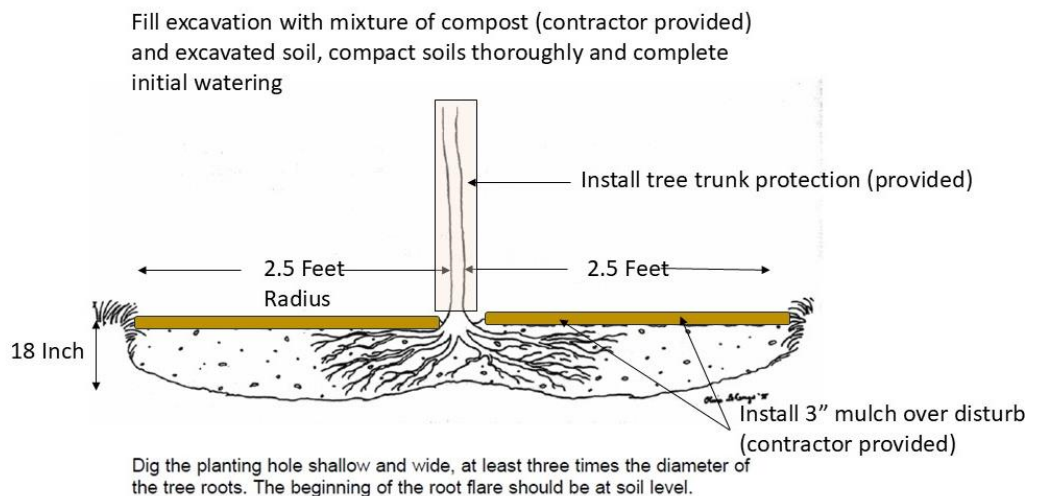
- Trees are provided and will be 1.5-2 inch caliper trees with a root system that is typically 4-5 feet wide by 18 inches deep (see image and diagram).
- Trees will be stored on site and placed out of the sun in a moist environment until planting occurs.
- Trees are bare root and protected by hydrogel and large plastic bags, that must remain on the trees until they are planted on site. The plastic bags protect the roots from drying out.
- Trees **Must** be planted during the 3 weeks after trees are received April ~8th. No excuses will be accepted because trees are bare root and must be planted quickly before they break bud.
- All tree locations will be marked by Luzerne Conservation District staff with orange paint, wire flag or stake.
- **All utilities must be located via the One Call System. This is mandatory for all tree plantings and is the responsibility of the contractor to secure utility mark out. Utility mark out and protection of utilities during planting is the responsibility of the contractor.** Conflicts between utilities and planting location(s) will be addressed by the Inspector if conflicts arise.
- Planting Project Inspectors from the Luzerne Conservation District will be on site to advise contractors and ensure that trees are planted properly.
- Planting holes shall be dug to match the tree's root systems, allowing the roots to spread out laterally and planted at a proper depth so that trunk flare is visible once planting is completed. If trunk flare is not visible after planting and at time of inspection, the tree must be replanted at the proper depth to complete the project and receive payment.
- **Planting hole dimensions are 2.5 feet radius from the trunk by 18 inches deep, variations must be approved by the inspector. (See attached Planting Detail)**
- Planting holes can be dug with an excavator and tree planted with hand tools (shovels).
- Backfill soils should be a combination of excavated soils on site that are amended with **compost that the contractor must provide** and be approved by the inspector. Approximately two wheelbarrows of compost should be mixed into the backfill soils for each planted tree. Excess soil removed during the tree planting will be disposed of by the contractor.
- When planting, soil shall be tamped and compressed to avoid trees from heaving and blowing over. Soils packed by workers' feet typically works to tamp soils.
- Following proper planting with trunk flare visible, all newly planted trees shall be watered on the day of planting and mulched across the disturbed surface properly.

Meyers Pond Riparian Tree Planting Project 2025

Jackson & Dallas Township, Luzerne County

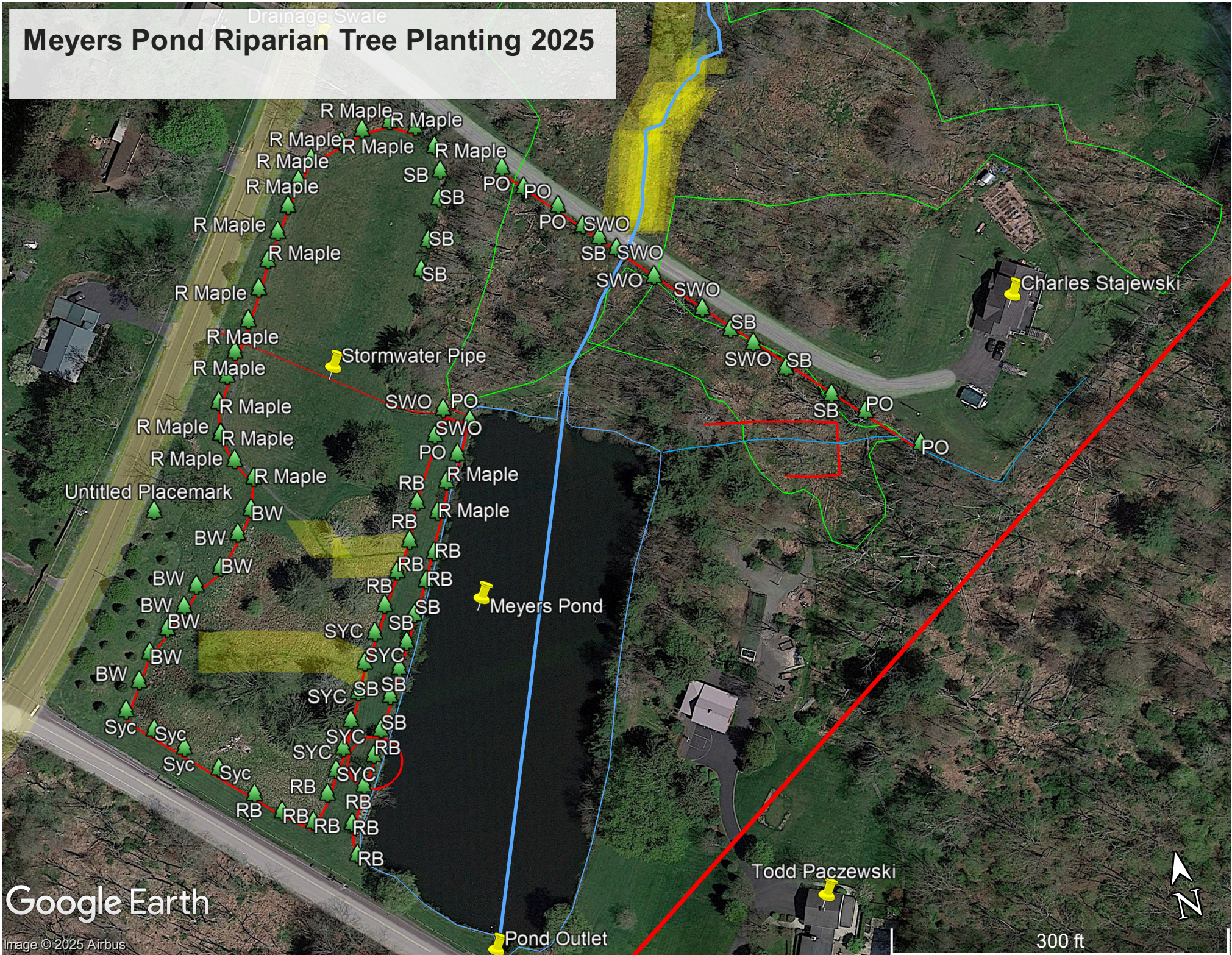
Each tree should receive 10 gallons of water to settle soil, remove air pockets and rehydrate the root systems.

- Wood Mulch should be applied out from the tree on a 2.5-foot radius, with all sod and grass removed. Mulch should be applied to a depth of 2-4 inches per tree. Mulch should not be piled on the trunks of the trees.
- Compost, mulch and water will be the responsibility of the contractor. Water can be secured from Posten Pond or the waterway between Posten Pond and Bulford Road.
- All debris and sod removed during planting must be disposed of by the contractor.
- Trees do not need to be staked when planted, but protective plastic sleeves will be provided to protect the trunks of the trees from bark injury (buck rubs, etc.). The contractor shall install the protective sleeves provided once the trees are planted.
- All ruts, loss of grass or disturbance of soil coincidental with the planting of trees must be restored to the former conditions, seeded and mulched. This requirement does not include the 2.5 foot radius around the newly planted trees.
- **All planting must start on or before April 15th and must be completed by May 1st because of the nature of bare root trees. Trees are expected to arrive approximately the week of April 8, 2025, dependent upon weather conditions and frozen grounds at the nursery supplying trees.**



Typical Bare Root Tree Planting
Meyers Pond Riparian Planting

Meyers Pond Riparian Tree Planting 2025



Google Earth

Image © 2025 Airbus

300 ft